

# PCN

## PEST CONTROL NEWS®

THE MAGAZINE FOR THE PEST CONTROL INDUSTRY



## BUYING PROFESSIONAL RODENTICIDES

HAS CHANGED FROM 1<sup>ST</sup> JANUARY 2026

ISSUE **142**

### Yellow-legged Hornet Sightings on the Rise

06

UK reports rising yellow-legged hornet activity in 2025, with 541 sightings, 159 nests destroyed, and NBU continuing active responses nationwide.

### CRRU UK Open Letter

12

Buying Professional Rodenticides has changed. Find out what you need to do.

### AF Trap Base: A Smarter, Safer Solution for Mouse Control

28

Killgerm's new AF Trap Base offers a reusable, license-free alternative to glue traps, delivering precise, humane mouse control in challenging environments.

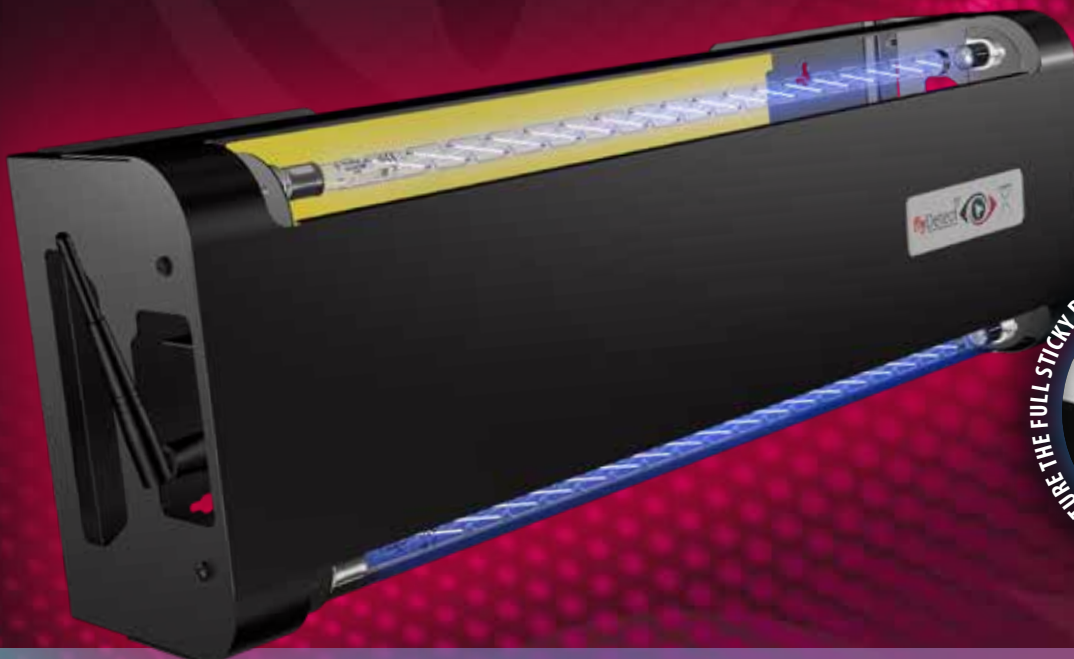




**flyDetect**<sup>®</sup>  
IPM Online Monitoring System



QUANTUM<sup>®</sup>  
LED



**NEW AND IMPROVED**  
WITH **NO SUBSCRIPTION FEES** AND **QUANTUM X LED TUBES**

The pioneer in flying insect  
remote surveillance just got **even better.**

**flyDetect X** is built for **24/7 remote fly monitoring**, allowing visual access to images of the trap's sticky board on demand. With **customisable alerts** and **multi-site visibility**, whilst consuming less than half the power of the fluorescent model and now with **no subscription fees**.

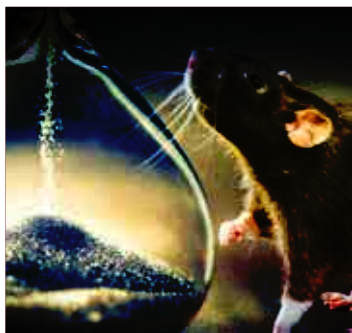
For more information please visit  
**www.flydetect.com**

PATENT PROTECTED GRANT NO. 3506745



Scan the QR Code to  
visit flydetect.com

Confidence in  
**Fly Control**



# Bitesize...

## Yellow-legged Hornet Sightings on the Rise

06

UK reports rising yellow-legged hornet activity in 2025, with 541 sightings, 159 nests destroyed, and NBU continuing active responses nationwide.

Keep up-to-date with your professional development

All Pest Control News readers can now receive two BASIS PROMPT CPD points per calendar year. All you need to do to claim these points is include PCN on your annual BASIS PROMPT record using the following code:

**PC/94799/20/g**

For further information on the BASIS PROMPT scheme or to register, please visit:

**[www.basis-reg.co.uk](http://www.basis-reg.co.uk)**

Please address any of the above to:

**Pest Control News Limited,  
Wakefield Road, Ossett,  
West Yorkshire WF5 9AJ.**

tel:  
**01924 268400**

e-mail:  
**[editor@pestcontrolnews.com](mailto:editor@pestcontrolnews.com)**  
**[technical@pestcontrolnews.com](mailto:technical@pestcontrolnews.com)**

**Editor:** Sophie Newton  
**Technical Editor:** Matthew Davies  
**Co-Technical Editor:** Avril Turner  
**International Contributor:** Stuart Mitchell

### Bed Bugs Boosting Their Defences: New Evidence on Insecticide Resistance

09

Bed bugs are evolving stronger detoxification enzymes, reducing insecticide effectiveness and highlighting the need for robust, multi-method IPM strategies.

### CPD Points

13

CPD keeps pest professionals current, supports compliance for 2026 rodenticide rules, and can be earned through training, events, memberships, media, and podcasts.

### Biscuit Beetle

19

Biscuit beetles are infesting chipboard made with puffed corn, creating hidden kitchen hotspots and highlighting new IPM challenges in sustainable materials.

### Kit Maintenance on Ladders

25

Ladder use requires proper training, correct ladder selection, adherence to EN standards, and thorough pre-use safety checks to prevent accidents.

### New Products

29

Showcasing the latest products in the pest control industry

### Celebrating 25 Years of Raising the Standard in Pest Control

32

2025 marks 25 years of BASIS PROMPT, championing CPD, professionalism, new digital tools, and trusted standards in UK pest management.

### Buying Professional Rodenticides has Changed

12

New rules from January 2026 require updated CRRU-approved training or CPD for buying professional rodenticides.

### Celebrating Progress and World First for Fertility Control Research

15

UK researchers achieved the first oral immunocontraceptive infertility in rats, advancing development of a non-lethal fertility control method for grey squirrels.

### Fendona 6SC Returns: The Comeback of a Trusted Insecticide

21

Fendona returns to the UK with updated labels but the same reliable performance, offering strong residual control and renewed industry confidence.

### Health & Safety - Pathogens in pest management Part 2

26

Rodents carry multiple pathogens, including RBF, LCMV and toxoplasmosis. Good hygiene, PPE and proper pest management are essential to reduce risk.

### Building the Future Pest Control Workforce

30

How the NPTA Is Helping Members Attract New Talent

### Employment Rights and the Upcoming Changes

34

The Employment Rights Bill introduces major reforms, ending zero-hour exploitation, strengthening dismissal protections, and increasing job security with new employer obligations.

### Killgerm Group attended, sponsored and presented at the 11th ICUP

11

Killgerm Group presented new rodent pathogen research at the 11th ICUP in Lund, contributing workshops, expertise, and international collaboration across 31 countries.

### The Science of Nemesis X: The Electrifying End of a House Fly

17

Nemesis® X instantly kills flies through electrical neuro-disruption, heat damage, and LED-enhanced attraction, delivering rapid, hygienic, high-efficiency flying insect control.

### Exhale: The Human in a Can Revolutionising Bed Bug Detection

22

We interviewed Skatek founders Christian and Nikolai Hagelein about Exhale, the 'human in a can' boosting bed bug movement and monitoring.

### AF Trap Base: A Smarter, Safer Solution for Mouse Control

28

Killgerm's new AF Trap Base offers a reusable, license-free alternative to glue traps, delivering precise, humane mouse control in challenging environments.

### BPCA to Launch Pest Careers Hub: Your Help Needed

31

BPCA is launching pestcareers.org.uk, a new hub promoting pest management careers and seeking industry support to attract diverse new talent.

Pest Control News is a registered trademark of Pest Control News Limited. All material published remains the copyright of Pest Control News Limited. No part of this magazine may be lent, sold, hired out, reproduced, copied or otherwise disposed of in a mutilated condition or in any unauthorised cover by way of trade, or annexed to or part of any publication or advertising, literary or pictorial matter whatsoever, without the express prior permission of the publisher.

Pest Control News cannot accept responsibility for any unsolicited material whether advertising or editorial. Pest Control News cannot accept responsibility for any claims made in advertisements nor for any results or misadventures experienced from using products advertised therein.



## Remembering Oliver Madge, Respected Leader in UK Pest Control



The UK pest control industry is saddened to learn of the passing of Oliver Madge, a widely respected figure who dedicated nearly three decades to the sector. Known for his passionate advocacy for education and professional standards, Mr. Madge was an influential voice who left a lasting impact on the organisations and individuals he worked with.

Mr. Madge's most prominent role was as Chief Executive Officer of the British Pest Control Association (BPCA), a post he held for three and a half years. After leaving the BPCA, he founded the consultancy Pestwise, becoming a leading industry tutor, and established the not-for-profit Bed Bug Foundation CIC to raise standards in bed bug management. His most documented work centred on advancing the industry as a whole.

His influence extended across the sector. He was a sought-after speaker at key events such as PestTech and a regular author for publications like Professional Pest Controller magazine, sharing his expertise on topics from rodent baiting to risk mitigation. He also served as a media advisor for national outlets, including the BBC, ensuring the industry was represented with authority and professionalism.

Oliver Madge will be remembered for his unwavering dedication, his forward-thinking leadership, and his significant contribution to the professionalisation of the UK pest control industry.

[www.pestcontrolnews.com](http://www.pestcontrolnews.com)

## A Bug Bite Mystery

In June 2024, a resident of a five-story New York City apartment building sought help for persistent, unexplained bites that had begun in March. The bites caused rash-like marks on his torso and were initially suspected to be from bed bugs. Two pest management professionals inspected the apartment and applied insecticides, but no bed bug evidence was found and the problem continued. The resident also applied several over-the-counter treatments without success.

Photographs of suspected arthropods and stains collected from the bed and windows showed no signs of bed bugs. Further questioning revealed a history of mice and rat infestations in the building. Based on this information, attention shifted to mites. Using simple collection methods, the resident captured three mites from his bedroom. These were identified as house mouse mites (*Liponyssoides sanguineus*), a blood-feeding ectoparasite primarily associated with house mice and Norway rats.

After identification, additional treatments were applied and the resident intensified cleaning efforts, including frequent vacuuming, mopping, steaming furniture, laundering linens, and replacing the mattress. Approximately three months later, the bites stopped. Although the exact reason for the delayed resolution was unclear due to the lack of an on-site inspection, the house mouse mite was confirmed as



the cause of symptoms that had persisted for nearly six months.

Research shows that a high percentage of house mice carry these mites, which can survive weeks without feeding and reproduce away from their hosts. This case demonstrates the need for pest management professionals, entomologists, and physicians to consider rodent-associated mites when investigating unexplained bites. Accurate identification is essential to avoid unnecessary insecticide use, reduce indoor contamination, and shorten client suffering.

[www.pestcontrolnews.com](http://www.pestcontrolnews.com)

## NPTA Announces New Chair and Vice Chair Appointments



The National Pest Technicians Association (NPTA) is pleased to announce the appointment of Jasmin Emmerson as Chair and Hugh Radford as Vice Chair of the Association. Both appointments will be formally confirmed at the NPTA Board meeting on 21 January 2026.

Jasmin Emmerson brings extensive experience and leadership to the role of Chair, alongside a strong commitment to professionalism, inclusivity, and raising standards across the pest control sector. Her appointment reflects the NPTA's continued focus on strong governance and representative leadership. Hugh Radford's appointment as Vice Chair further strengthens the Board, bringing additional depth of industry knowledge and strategic oversight. He has a proven track record of supporting best practice and collaboration and will play a key role in supporting the Chair and wider Board.

Jasmin Emmerson said:

"It is a real privilege to be appointed Chair of the NPTA and I'm very thankful for the confidence placed in me by the Board. I'm looking forward to listening to members, working closely with colleagues across the sector, and ensuring the Association remains welcoming, supportive, and relevant."

Hugh Radford added:

"I would like to congratulate Jasmin on her appointment as Chair. The Association is going through an important period of change, and it's vital we stay grounded in the day-to-day experiences of pest controllers working on the tools."

Commenting on the appointments, Kevin Lawrenson, CEO of the NPTA, said: "These appointments mark an important step for the Association. Jasmin and Hugh bring credibility, experience, and a shared passion for championing pest controllers and supporting the professionalism of our industry."

## Pete May Appointed Syngenta Turf Technical Manager for UK and Ireland



Syngenta has appointed Pete May as Turf Technical Manager for the UK and Ireland. May brings more than 15 years of experience in sports, bowls and fine turf, supported by a degree in Biology and a strong background in Integrated Turf Management (ITM), nutrient programmes and field trials.

His career spans grassroots sport, lawns and fine turf, followed by senior technical and product management roles. May succeeds Sean, who has moved into the role of European Technical Manager, with the pair continuing to work closely.

In his new position, May will support Syngenta's ongoing research and trial work while working with turf managers to address challenges such as disease, pests, wear and environmental stress. He will be attending BTME on Stand 226.

[www.pestcontrolnews.com](http://www.pestcontrolnews.com)

## Congratulations Sabra Everett!



Killgerm Group proudly announces that Sabra Everett, Group Marketing & Public Affairs Director and one of the company's three Executive Board Directors, has been honoured with the Lifetime Achievement Award at the National Pest Awards.

With more than 20 years of service, Sabra has demonstrated exceptional dedication to the pest control industry—both within Killgerm and far beyond. She is widely recognised across Europe and the United States for her tireless efforts to promote, grow, and protect the sector.

[www.pestcontrolnews.com](http://www.pestcontrolnews.com)

**NEW!**

# MOUSE iQ

POWERED BY

**Bell**  
SENSING TECHNOLOGIES®

## EASY TO USE TECHNOLOGY- NOW IN A MOUSE TRAP

- ▶ Never check an empty trap again
- ▶ Sensitive & durable mouse trap with sensor
- ▶ Small footprint = place exactly where mice are travelling
- ▶ Simple to use: 🚫 catch or ✅ no catch
- ▶ Integrated 📶 Bluetooth® technology

PRODUCT	CODE	DIMENSIONS (cm.)
MOUSE iQ	IQ2106	10.1 x 4.4 x 6.9



### PLACE TRAPS WHERE MICE TRAVEL

[www.bellsensing.com](http://www.bellsensing.com)

Scan our  
QR code  
for more  
information





# Yellow-legged hornet sightings **on the rise**

🔗 [www.pestcontrolnews.com](http://www.pestcontrolnews.com)    📧 [@pestcontrolnews](https://twitter.com/pestcontrolnews)    👍 [facebook.com/pestcontrolnews](https://facebook.com/pestcontrolnews)



## Sightings of yellow-legged hornet *Vespa velutina* (also known as Asian hornet) in GB this year continue to rise (data correct as of 24th November 2025).

So far in 2025 there have been 541 sightings of yellow-legged hornet (YLH), and 159 nests found.

The latest update from the Animal and Plant Health Agency's National Bee Unit (NBU) is included below:

- As of 21st November, the NBU have received further credible reports of YLH's. This means that currently there has been a total of 544 sightings in 2025.
- Since the last update, two more nests have been discovered in Ewhurst, East Sussex and Swyre, Dorset. These nests have been destroyed and will be removed.
- As of 21st November, 161 confirmed nests have been found in 2025.
- The NBU continue to respond to credible sightings that are reported.

**More information and details of previous sightings can also be found on the website of the National Bee Unit (scan Qr code below.) We would be grateful for your support in helping to raise awareness and encourage reporting of any further sightings.**



Scan QR code to go to  
the National Bee Unit website



Any suspected sightings should ideally be reporting via the Asian Hornet Watch app or the online reporting form (scan QR code above). Free alert posters and ID sheets are available on request to help with awareness raising. For further details on identification and reporting, please visit the yellow-legged hornet alert page.



# The Mental Toll of Bed Bugs

## Study Reveals Key Stress Factors & Role of Social Support

A new study conducted in Lyon, France, has delved into the significant mental health impact of bed bug *Cimex lectularius* activity, aiming to identify factors that predict higher levels of bed bug-related stress. The findings underscore the psychological burden these pests place on individuals and highlight the crucial role of social support and appropriate pest management practices.

### Study Overview:

**Focus:** Researchers investigated predictors of bed bug-related stress in 305 adults in Lyon, France, who had experienced an infestation. The analysis focused on 167 individuals with a recent infestation (within the last year). **Method:** Paper and online surveys were used to collect data on socio-demographics, clinical history, and infestation-related characteristics. A significant majority – about two-thirds of individuals with a recent infestation – were deemed to have a high level of bed bug-related stress

### Major Predictors of High Bed Bug-Related Stress:

The study identified several factors consistently associated with an increased likelihood of experiencing high levels of stress due to bed bugs:

#### Social Isolation & Relationship Status:

- Being single was a strong predictor of higher stress.
- Social restrictions (self-imposed due to fear of spreading bed bugs) also significantly increased stress.

#### Demographics:

- Younger age (especially <35 years old) was linked to higher stress.
- Female sex was associated with a greater likelihood of high stress.
- Having no children living at home (interpreted by researchers as a potential lack of immediate social support or an added burden if children are present elsewhere and at risk).
- Education level was also a factor.

#### Infestation Severity & Treatment:

- Spread of infestation to more than one room.
- Treatment ineffectiveness (bed bugs not disappearing quickly).
- Difficulties in preparing for treatment.
- Use of insecticides, especially when health issues were not considered by the applicator or usage conditions were unclear.

#### Psychological Factors:

- Fear of contaminating others.
- Having a past or current psychiatric history.

#### The Crucial Role of Social Support:

The study found a significant interaction: the likelihood of bed bug-related stress decreased when participants felt socially supported (from family, friends, landlord, or reassuring advice from a pest controller), even when the

infestation was severe. This suggests that a strong support network can act as a buffer against the psychological impact of a difficult infestation. Interestingly, being in an intimate relationship sometimes had the opposite effect if the infestation was severe or difficult to treat, possibly representing an additional mental burden for the couple.

#### Implications for Pest Control Professionals:

These findings offer valuable insights for PCOs in how they approach and communicate with clients dealing with bed bug infestations:

**Acknowledge the Stress:** Recognise that a bed bug infestation is not just a pest problem but a significant psychological stressor for many clients. Empathy and understanding are key.

#### Importance of Clear Communication:

- **Key Fact:** "Unclear use of pesticides" was a stressor. This highlights the need for PCOs to thoroughly explain treatment processes, safety precautions, and potential health considerations to clients. Transparency can reduce anxiety.
- Explaining preparation requirements clearly and offering support or resources for those struggling with preparation can alleviate a major stress point.

**Encourage Social Support:** While PCOs aren't counsellors, gently encouraging clients to lean on their existing social networks (family, friends) if they seem isolated could be beneficial.

**Professionalism as Support:** The study suggests that support from the pest controller themselves can reduce stress. Being reliable, knowledgeable, and reassuring contributes positively to the client's experience.

**Consider Vulnerable Clients:** Be aware that younger individuals, females, single people, and those with pre-existing mental health conditions may be more susceptible to high levels of stress. Tailor communication and support accordingly.

#### Insecticide Use – Safety First:

**Key Fact:** The safest use of insecticides is paramount. When insecticides are necessary, ensure all safety precautions are taken and clearly communicated. This builds trust and can mitigate stress related to insecticide exposure fears. **Highlight Treatment Efficacy:** Setting realistic expectations about treatment timelines and effectiveness, and achieving successful eradication, will naturally reduce long-term stress.

#### Conclusion for the Industry:

This research reinforces that bed bug infestations are a serious issue with significant mental health consequences. While PCOs focus on eradication, understanding and acknowledging the client's stress is vital.

Social support (reassuring advice from a PCO counts) and the clear, safe, and effective use of control methods (especially insecticides) are crucial in mitigating bed bug-related stress.

Promoting clear communication, empathy, and thorough, safe practices can significantly improve the client's experience and well-being during a very challenging time.

#### Reference

<https://scijournals.onlinelibrary.wiley.com/doi/10.1002/ps.8731>



# Bed Bugs Boosting Their Defences:

## New Evidence on Insecticide Resistance

Recent research has provided further troubling evidence that bed bugs (*Cimex lectularius*) are becoming increasingly adept at surviving insecticide treatments. This isn't just about them getting a bit tougher; they're developing more sophisticated internal mechanisms to fight off the chemicals we use.

### What's New? Beyond Known Resistance

Pest controllers are already aware of common resistance mechanisms like target-site insensitivity (where the insecticide can't bind properly to do its job) or thicker cuticles (making it harder for insecticides to penetrate).

- Key Fact: This new evidence strongly points to enhanced detoxification as a major, and evolving, factor in bed bug resistance.
- Bed bugs are essentially "supercharging" their ability to break down and get rid of insecticides before they can cause harm.

### How Are They Doing It? Supercharged Detox Enzymes

- The study highlights that resistant bed bug populations are showing increased activity and production of specific groups of detoxification enzymes.
- These enzymes act like an internal clean-up crew, metabolising (breaking down) insecticides into less harmful substances.
- Key Fact: Three main enzyme families are implicated:
- Cytochrome P450 monooxygenases (CYP450s): Known for a broad

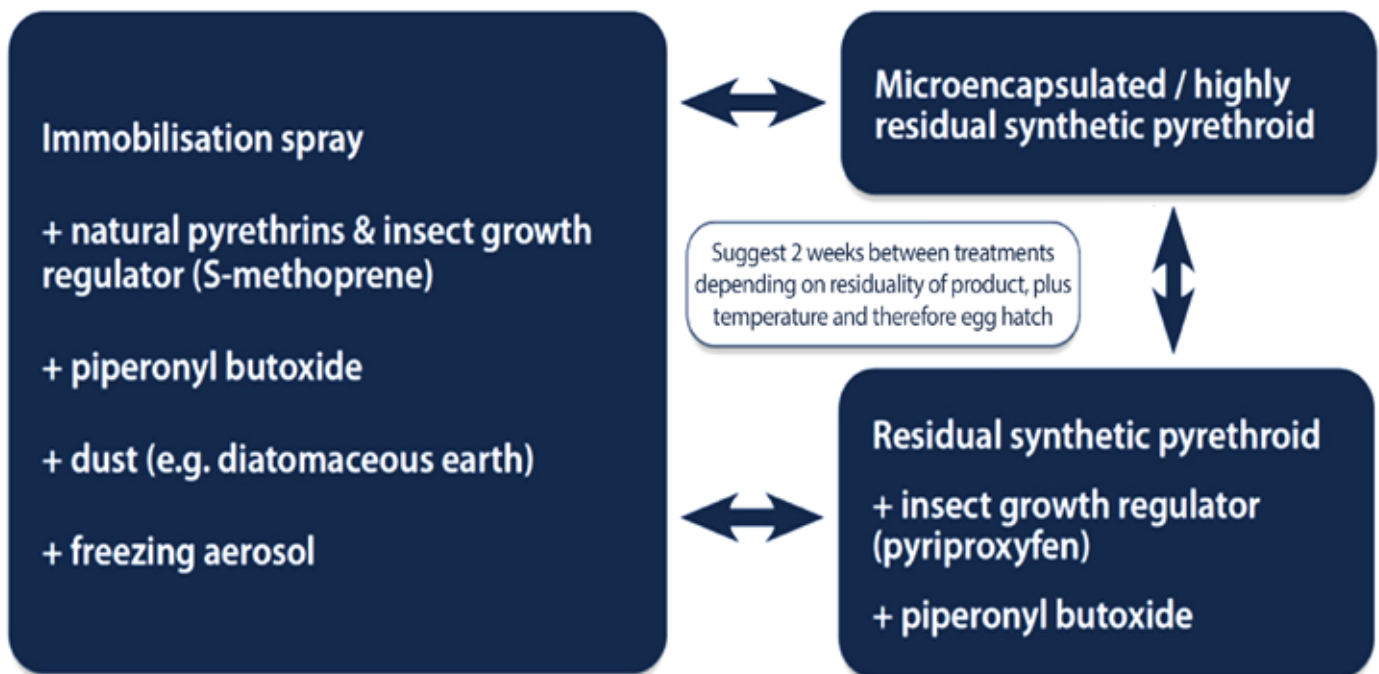
role in detoxifying foreign chemicals.

- Carboxylesterases (CCEs): Also play a significant part in breaking down ester-containing insecticides (like many pyrethroids).
- Glutathione S-transferases (GSTs): Involved in detoxifying a range of compounds, including insecticides.
- Resistant bed bugs can produce these enzymes in larger quantities or have versions that are more efficient at neutralising insecticides.
- This means even if the insecticide enters the bed bug, it can be rendered ineffective much more quickly than in susceptible populations.

### Why This Matters to PCOs

- Understanding these enhanced detoxification mechanisms is crucial for professionals on the ground.
- It helps explain why some insecticide treatments, particularly those heavily reliant on certain chemical classes (like pyrethroids, which are often targeted by these enzymes), may show reduced efficacy or outright failure.

## UK expert advice on insecticide choice for effective bedbug control:



Reference: <https://www.mdpi.com/2075-4450/15/10/737>

- Key Fact: This can lead to increased call-backs, customer dissatisfaction, higher treatment costs, and the potential for infestations to spread further.
- It underscores that bed bug resistance is a complex, multifaceted issue, often involving several different mechanisms working in tandem within a single population. A "one-spray-kills-all" approach is increasingly unlikely to succeed.

### The Takeaway: Adapting Control Strategies

- This research reinforces the importance of evolving our bed bug management strategies.
- Key Fact: A robust Integrated Pest Management (IPM) approach is more critical than ever.
- Do not rely solely on chemical treatments. Non-chemical methods such as heat treatments, steam, thorough vacuuming, and mattress encasements should be integral parts of any bed bug control programme.
- Consider insecticide rotation: Where feasible and effective alternative active ingredients are available, rotating between different chemical classes may help manage resistance development

(though options are limited for bed bugs) such as insect growth regulators and physical immobilisation sprays.

- Thoroughness is paramount: Meticulous inspection to find all harbourages and ensure comprehensive treatment (whether chemical or non-chemical) is vital to overcome pockets of resistant individuals.
- Stay informed: Keep up-to-date with the latest research on resistance and new product developments that may offer alternative modes of action.

**This ongoing evolution of resistance in bed bugs means the pest control industry must remain vigilant, adaptable, and committed to IPM principles to effectively manage these challenging pests.**





Killgerm Group attended, sponsored and presented at the 11th International Conference on Urban Pests in Lund (Sweden), supporting and delivering original scientific research in the field of urban pest management.

Killgerm and University of Reading PhD student Ana Carolina Yamakawa, supervised by Killgerm's Dr Matthew Davies, presented cutting-edge scientific research on rodent pathogens.

Dr Matthew Davies (Head of Technical Department at Killgerm Chemicals Ltd, Chair of the 9th International Conference on Urban Pests and now a member of the Executive Committee), also delivered a workshop on the 'Future of the International Conference on Urban Pests' and presented findings to the assembled delegates, who represented an incredible 31 countries.

In attendance were also Killgerm Germany biologists Dr Carolin Pfeiffer and Dr Melania Akkose. The UK contingent was added to by Technical Managers Melvin Knapp and Michael Dunbar. Martin Nilsson provided the local presence as Managing Director of Killgerm Sweden.



# BUYING PROFESSIONAL RODENTICIDES HAS CHANGED...



✕ @ThinkWildlife

👍 facebook: Think Wildlife - CRRU UK

## Dear Professional Rodenticide User:

### Changes to Certification Needed When Buying Professional Rodenticides

**Urgent action is required as regulation changes came into effect from 1 January 2026** there are new enhanced proof of competence requirements for everyone buying or using professional rodenticides.

**From 2026 farm assurance are no longer acceptable as proof of competence.**

There are two options for obtaining the mandatory certification, for continued access to the rodenticides you may need.

**From 1 January 2026 you will need to either:**

- Provide proof of training on a CRRU UK approved course, that must have been completed in the past 5 years.

**Or**

- Be part of a CRRU UK recognised Continuing Professional Development (CPD) scheme.

Starting 1 January 2026, you will need to provide evidence of one of these requirements at the point of sale. Additionally, as of April 2025, **an updated declaration has been issued** and will need to be signed and returned to the place of rodenticide purchase.

Appointed by the Health and Safety Executive (HSE), CRRU UK was established to promote responsible use of rodenticides among all professional user groups, including professional pest controllers, farmers and gamekeepers.

**CRRU UK approved CPD schemes include 3 CPD points (hours/credits) of rodent-control content that meets CRRU UK guidelines. These points are required each year as part of the standard membership quota.**

## FAQ's

### Which CPD schemes are CRRU UK approved?

A3: CRRU UK approved CPD schemes are listed here: <https://www.thinkwildlife.org/training-certification/continuing-professional-development-cpd-and-stewardship/>

### If I choose the CPD route, when do I need to join a CRRU UK approved scheme?

A4: Users joining an approved CPD scheme for the first time will need to join in 2025 and complete their membership criteria during this period to be ready for the 1st January 2026 changes. Remember to continue to maintain your membership in the following years. (CRRU UK approved CPD schemes feature 3 points / hours / credits of rodent control content that conforms to CRRU UK guidelines, required each year as part of the normal quota for membership. This is to be assessed as part of the event.)

### What will the 3 points / hours / credits, of rodent control content that conforms to CRRU UK guidelines look like? (Required each year as part of the normal quota for membership. This is to be assessed as part of the event)

A5: CRRU UK has supported delivery of CPD by producing learning resources that are available to CRRU UK approved CPD schemes, for dissemination via their established routes to users. The expertise of CRRU UK member companies, stakeholder organisations and individuals have been harnessed to create a series of CPD training modules made freely available at the CRRU UK website (<http://www.thinkwildlife.org/training-certification/continuing-professional-development-cpd-and-stewardship>). The modules, each comprising a PowerPoint presentation taking 45-60 minutes for completion, are supported by detailed trainers' notes. The resources will continue to be downloaded by training organisations and used during face-to-face or online education events. Resources were made available in January 2025.

Scan to find out about  
CRRU UK approved  
training & certification  
plus CPD







# CPD Points

➔ [www.pestcontrolnews.com](http://www.pestcontrolnews.com)    ✖ [@pestcontrolnews](https://twitter.com/pestcontrolnews)    👍 [facebook.com/pestcontrolnews](https://facebook.com/pestcontrolnews)

**Continuing professional development (CPD) is critical in any industry, and Pest Management is no exception. Without CPD we may have been forced to become licensed long ago. There are many attributes to CPD, but for the pest professional, being part of a scheme can be an asset not just to the individual but to the company overall. We need them, it doesn't have to be hard to get them, it might even be enjoyable.**

## Why CPD and why be part of a scheme?

CPD is an outward symbol of the individual being up-to-date, something that is becoming ever more crucial in challenging times. Professional standards are maintained, especially regarding varying attribute assessments, for example, health and safety, personal development, and application practice (considering the Campaign for Responsible Rodenticide Use (CRRU UK) requirement of 3 rodent-specific points for 2026).

## CPD Schemes

- Basis-prompt - <https://basis-prompt.co.uk/>
- BPCA Registered - <https://bpca.org.uk/registered>
- British Pest Register - <https://pest-register.co.uk/>

The requirement for all schemes is 20 points per year (3 of those 20 must be rodent-specific CRRU-approved points for 2026). All of the above schemes are CRRU UK approved. The schemes themselves often have resources, guidance and signposting to help you to gain CPD. For example, Basis-prompt has launched Basis Classroom. As a Prompt member, you have access to bite-sized e-learning, short courses with a few questions to demonstrate information dissemination.

## Where to get points?

### Professional Memberships

Just being a member of the National Pest Technicians Association (NPTA) or the British Pest Control Association (BPCA) gets you points, make sure you claim them.

### Face to face

- In person training - The classic training classroom scenario, either to refresh, learn something new, or take a deeper dive into a certain subject.
- Workshops are a great way to earn points, interactive and progressive learning, perfect for the most up-to-date information and contact with key personnel in the industry who can answer any questions. Farm Days and In the Mix, both filled with practical hands-on demonstrations.
- NPTA On The Road Days and BPCA Forums, packed full of seminars, interactive discussions, and mini exhibitions.
- Breakfast meetings are a short and effective way to get a download of new/current information, and new products (and a free brekkie of course!). Then get on with your day.

- In-house training and team meetings all count, especially if they have toolbox type talks included.
- Area Sales Manager meetings, whenever you see your ASM, you can claim for this too.

### Online

Very similar to the above methods, but importantly more time flexible. Many of the online training resources allow you to learn at your own pace by taking the course a section at a time. Not forgetting live online training, digital forums and webinars.

### Magazines and newsletters

PCN Magazine (Pest Control News), Pest magazine, PPC magazine (Professional Pest Controller – BPCA), NPTA newsletters, All of the pest publication magazines are available online.

### Trade shows/events

Simply walking in will gain you a couple of points, the real value is attending seminars, presentations, expert panel discussions, or the demonstrations within the main event. You may be able to claim points for attending trade shows that are not pest management shows too. For example, Society of Food Hygiene and Technology (SOFHT) and the numerous shows around the UK, The Health and Safety Show at the NEC being just one of them.

## Upcoming for the pest management diary:

- **PestEx 2026 (BPCA's 2 day Trade show and exhibition) 18-19 March 2026 at the ExCel Exhibition Centre, London.**
- **PestTech (NPTA's Trade event) 2026, Marshall Arena, Milton Keynes.**

### Podcasts

A great way to gain points, and very simple to do. Listen while you are out and about. Killgerm's The KG PodCast is audio – wonderful for in the van (listen out for the all-important codes). Other podcasts are live with visuals (Pest Perspectives and The Beauties & Beasties Podcast to name a couple) – follow them online, and you may be able to obtain points for those.

There are other ways too, if you have completed anything outside of standard pest management, such as attending other types of trade shows - anything personal development related, or even other training in any area, it may be able to contribute to points. Even spending time with other pest professionals, in a non-structured way can result in a learning experience which could all count. An example of this is meeting an area sales manager.

**Resources:** <https://www.killgerm.com/cpd-points-hub/>  
<https://killgermtraining.com/>

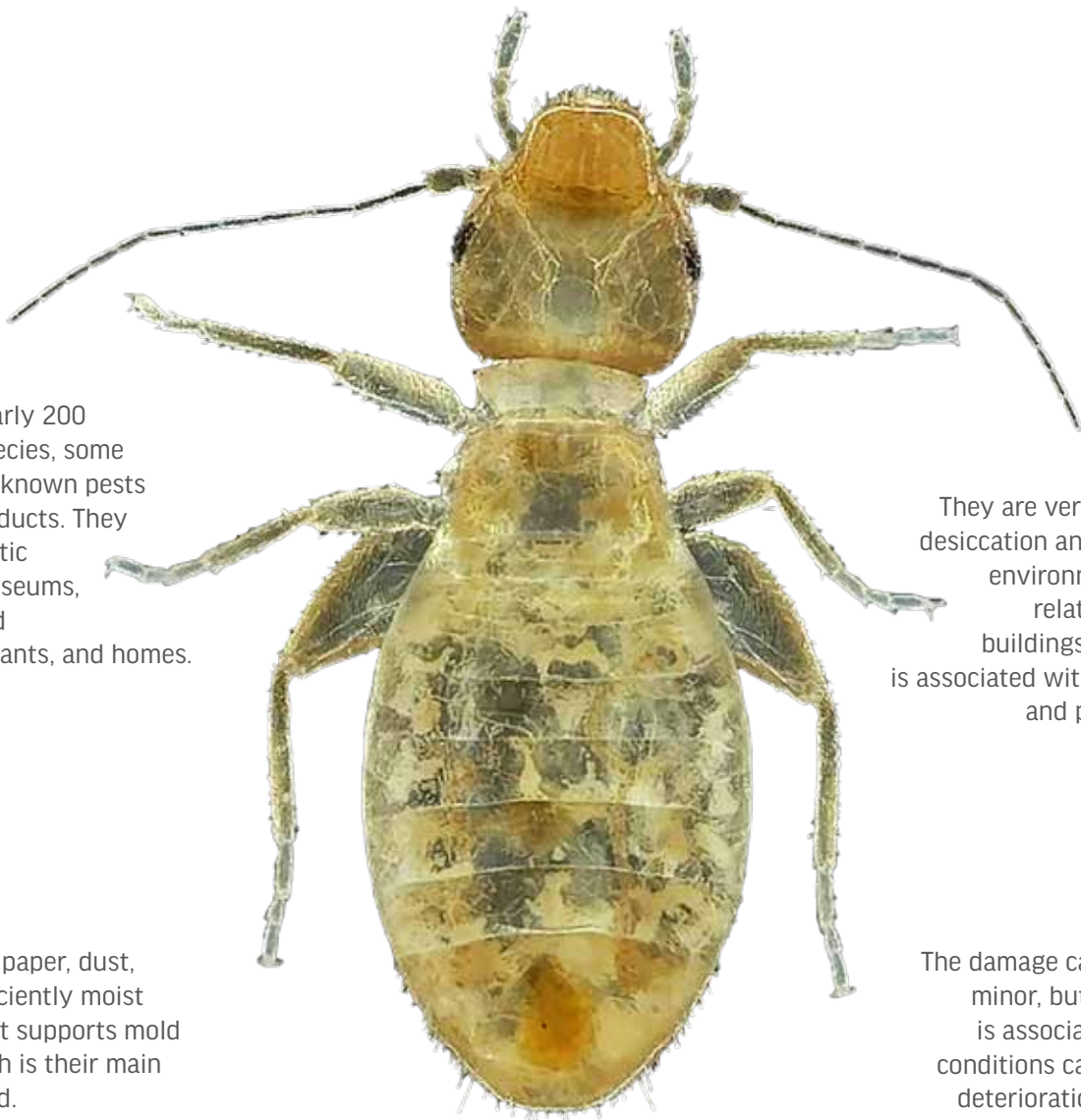
# Booklice/Psocids (Order Psocoptera)

*Liposcelis* spp. | Family: Liposcelididae

[www.pestcontrolnews.com](http://www.pestcontrolnews.com)
[@pestcontrolnews](https://twitter.com/pestcontrolnews)
[facebook.com/pestcontrolnews](https://facebook.com/pestcontrolnews)

Very small insects, 1 to 2 mm in size. Filiform antennae with approximately 15 segments. Chewing mandibles and broad head.

Incomplete metamorphosis (egg, nymph, adult). They are usually wingless. Their life cycle is determined primarily by the temperature and humidity of the affected facilities.



There are nearly 200 described species, some of them well-known pests of stored products. They are problematic insects in museums, libraries, food processing plants, and homes.

They are very susceptible to desiccation and tend to live in environments with high relative humidity. In buildings, their presence is associated with high humidity and poor ventilation.

They feed on paper, dust, and any sufficiently moist substrate that supports mold growth, which is their main source of food.

The damage caused is usually minor, but the fact that it is associated with humid conditions can be a factor in deterioration, and its mere presence in a food product makes it unacceptable to the consumer.



# CELEBRATING PROGRESS AND WORLD FIRST FOR FERTILITY CONTROL RESEARCH

➔ [www.pestcontrolnews.com](http://www.pestcontrolnews.com)    ☒ @pestcontrolnews    👍 [facebook.com/pestcontrolnews](https://facebook.com/pestcontrolnews)

Animal and Plant Health Agency (APHA) researchers funded by the UK Squirrel Accord (UKSA) and supporters attained a world first for wildlife fertility control. Positive news for a programme aiming to find a non-lethal option for invasive grey squirrel management.

**The multi-year research programme being delivered by APHA has resulted in a scientific breakthrough by achieving infertility in rats through free feeding of an oral immunocontraceptive – a world first. The research ultimately aims to develop a vaccine-based contraceptive and species-specific feeder to reduce grey squirrel numbers for the protection of UK red squirrels, trees and woodland ecosystems. The formula has also succeeded in achieving a reaction in grey squirrels and research is ongoing to refine the formula to increase effectiveness.**

Fertility control is increasingly used around the world as a safe and non-lethal option to tackle wildlife problems. The APHA team is redesigning injectable immunocontraceptive vaccine technology, already used to manage other mammals, into an oral formula that can be delivered via feeding hoppers only accessible by grey squirrels. This contraceptive affects an animal's immune system to prevent it creating the sex hormones and causes infertility in both males and females.

Developing a formula that can survive the body's digestive processes and still make it into the bloodstream is a real challenge. A key part of the research is combining the contraceptive with components that provide protection before delivery through the lining of the gut. The research does this using natural capsules made from plant spores created by Sporomex Ltd – a technique already used in

clinical studies to deliver vitamin D to human volunteers. These capsules protect the active contraceptive ingredient while also being kind to the environment.

APHA is also collaborating with experts from the Roslin Institute and MV Diagnostics to increase the scale and duration of the effect of the immunocontraceptive vaccine to make it suitable for use in the wild. The final product must remain stable and effective once put into the species-specific feeder. The feeders being developed include one with a weighing platform that electronically opens the door only if the animal is within a certain weight range. This makes it specific to adult grey squirrels, which are heavier than reds.

Research of this scale would not be possible without the generosity of contributions from UKSA signatories, grant-making organisations and private individuals and estates. The donors are motivated by their understanding of the benefits of a new management method for UK grey squirrels. As well as wider potential opportunities for problematic mammal species management.

Lord Kinnoull, Chair of the UK Squirrel Accord, said: "This is a major step forward for our research. We understand that many people want to see this product available tomorrow. However, we must ensure that what is created is effective and that takes time. This will be the world's first oral free-feeding immunocontraceptive and its potential for

mammal management is significant".

Bex Pinkham, Mammal Subject Lead for the Animal and Plant Health Agency said: "I'm really encouraged by the progress we've made in our research so far as part of this important partnership project. These breakthroughs are a positive step forward towards a grey squirrel management tool that will mean so much for our UK woodlands."

MV Diagnostics said: "We are excited to be involved in this groundbreaking research. Developing an immunocontraceptive that could be used in this way has major implications for the ethical control of problem mammals".

Vanessa Fawcett, Red Squirrel Survival Trust Campaign Director, said: "Fundraising has begun for the next stage of this groundbreaking research project, to bring an effective and affordable grey squirrel oral fertility control system to market. Active dialogue is underway with current donors and new donors are being sought, to support the further refinement and development of the vital work being done at the Animal & Plant Health Agency. Our vision is for our native red squirrel populations to be secure and expanded beyond their current strongholds, and to see our woodlands flourishing, continuing to deliver multiple benefits for future generations."

For further information or questions please email [kay.haw@squirrelaccord.uk](mailto:kay.haw@squirrelaccord.uk)



# **A COCKTAIL OF DISCOVERIES**

Join us for another unforgettable  
event with a twist!

**In the Mix returns on 21st April 2026  
at Drayton Manor Hotel  
Don't miss out!**





# The Science of NEMESIS<sup>®</sup> X

## The Electrifying End of a House Fly

By Dr. Stuart Mitchell

🔗 [www.pestcontrolnews.com](http://www.pestcontrolnews.com)

🐞 @pestcontrolnews

👍 [facebook.com/pestcontrolnews](https://facebook.com/pestcontrolnews)

Picture this: a House fly (HF), *Musca domestica*, the ever-bothersome antagonist of human spaces, lands on the electrified grid of the Nemesis<sup>®</sup> X, an innovative flying insect management system. With an instantaneous and decisive electrocution event, HF's fate is sealed. But what exactly happens in those milliseconds? Let's explore the physiological and neurological events unfolding during this interaction, while highlighting the cutting-edge technology behind the Nemesis<sup>®</sup> X.

### First contact-electrical conduction through the body...

When HF interacts with the Nemesis<sup>®</sup> X grid, the high voltage creates a pathway for electrical current to flow through its body. The voltage differential overwhelms the resistance of HF's cuticle and internal tissues. In some events, a small electrical arc forms at the contact point if the voltage exceeds the dielectric breakdown of air (~3000 V/mm).

First contact marks the start of a chain reaction that neutralizes HF in milliseconds. The Nemesis<sup>®</sup> X design ensures uniform electrical grid coverage to maximize the efficacy of the electrocution process.

### System shutdown-neurological disruption...

The electrical current hyper-excites HF's neurons, triggering a massive and uncontrolled release of neurotransmitters. This overstimulation leads to instantaneous seizures and tetanic contraction, as HF's muscles contract simultaneously. The high voltage disrupts ionic gradients across neural membranes, effectively shutting down neural activity.

This phenomenon, called neuro-depolarization, leaves HF completely paralysed. Within milliseconds, the nervous system collapses, ensuring no recovery. The Nemesis<sup>®</sup> X performs this disruption with surgical precision, highlighting its engineering excellence.

### Heat generation and tissue damage...

- As electrical current flows, heat is generated within HF's body mass due to internal resistance.
- Heat causes significant tissue damage.
- Cuticle scorching, burning, or charring of the exoskeleton near the contact points.
- Internal liquefaction or denaturation of proteins and vaporisation of cellular fluids, leading to the rupture of internal organs.
- Electrical discharges or arcs exacerbate heat effects, creating small explosions as fluids within HF vaporize.

Nemesis<sup>®</sup> X mitigates the risks of flying insect debris with its removable catch tray. This ensures that hygiene is maintained even in high-use scenarios.

### Cardiac and respiratory collapse...

HF's dorsal vessel (analogous to a heart) is incapacitated by the electrical current, halting hemolymph (insect "blood") flow. Simultaneously, spiracles and tracheal tubes, which facilitate gas exchange, are physically damaged. This respiratory failure ensures that oxygen delivery to cells ceases, further contributing to HF's rapid demise.

### Irreversible damage-immediate death...

The combined effects of neural shutdown, muscle paralysis, and



thermal destruction lead to immediate cellular death. Damage is so extensive that recovery is improbable, even if contact with the grid is brief. The Nemesis® X ensures that its high-voltage, yet low-amperage, delivers rapid and efficient fly control.

#### Observational outcomes...

The aftermath of the electrocution event is sometimes visible. HF is dislodged by the force of the current, falling into the catch tray as a charred carcass. End-users might observe debris on the grid. The Nemesis® X catch tray simplifies HF capture, while enabling end-users to analyze flying insects for trends and root cause analyses.

#### Harnessing Quantum® X LED technology...

At the heart of the Nemesis® X are two novel Quantum® X LED filament lamps, each designed to optimally attract flying insects with a 360° beam emission of 370 nm UVA light. This advanced lamp technology uses 432 LED filaments, hermetically sealed in a glass tube with state-of-the-art gas cooling, ensuring superior UVA light quality and fly-capture performance.

With FEP shatter-resistant coating, Quantum® X LED lamps are Pb and Hg free, aligning with sustainability goals. The PestWest Mad Hatter® Lamp Recycling Program underscores commitment to environmentally responsible pest management.

[www.pestwest.com](http://www.pestwest.com)

#### Maximum efficacy-strategic placement...

Proper placement is essential for optimal Nemesis® X performance. Place the system with minimal ambient light competition and suspend at least 8.2 ft (2.5 m) above grade, assuring height and 360° line of sight. Flexible wall and ceiling mounting options make Nemesis® X adaptable to various non-food-processing environments.

#### A bonus feature-Cluster Fly (CF), *Pollenia rudis*, control...

With a simple modification, Nemesis® X manages large Cluster fly flushes by removing the catch tray and using an appropriate separate container.

#### Science in action...

From its high-voltage grid to its state-of-the-art Quantum® X LED technology, the Nemesis® X showcases the power of innovation and precision engineering. Every aspect of its design, from the safety interlocks to the eco-friendly LED lamps, prioritises safety, efficiency, efficacy, and sustainability.

**For the fly...it's an electrifying end. For you...it's the assurance of a more hygienic space and control of the ever-bothersome antagonist of human spaces...courtesy of Nemesis® X.**



# Biscuit Beetle



[www.pestcontrolnews.com](http://www.pestcontrolnews.com)
[@pestcontrolnews](https://twitter.com/pestcontrolnews)
[facebook.com/pestcontrolnews](https://facebook.com/pestcontrolnews)

It is the Integrated Pest Management (IPM) mantra to identify the insect and the source of its activity as a first step to control. PCN is grateful to German entomologists Dr Carolin Pfeiffer and Dr Melania Akkose for sharing an important observation – biscuit beetles *Stegobium paniceum* are taking advantage of puffed corn within chipboard, a source of activity that would normally go ‘under the radar’. Here is what they had to say.

Within a few weeks in 2023, we received several customer enquiries about biscuit beetle infestations in kitchens. Although infestations with biscuit beetles are common in kitchens, we had never heard of the insects developing inside the kitchen cabinets themselves. At the same time, we received a report from another customer about a case in which Tobacco beetles (*Lasioderma serricorne*) emerged from inside the kitchen cabinets in several kitchens belonging to one manufacturer.

Although both biscuit beetles and tobacco beetles belong to the family of wood-boring beetles (*Anobiidae*), they have more or less completely renounced wood. Only biscuit beetles occur in rare cases in old wood when it is glued with starch or bone glue.

Fortunately, one of our customers was able to provide us with a piece of the decorative trim from an infested kitchen for examination. In this piece of pressed chipboard, we found not only biscuit beetles, but also white particles that were unfamiliar to us from conventional chipboard. When viewed under a binocular microscope, the white material resembled the pith of plant stems or popcorn. We then researched corresponding materials and came across a new type of chipboard that contained up to 30% puffed corn, i.e. popcorn. This makes the boards not only lighter but also more sustainable, as corn grows back faster than wood. According to information on the internet, these chipboards are also used in kitchen construction. It was not possible to determine how many kitchen manufacturers use this material, since when and to what extent.

It was not easy for the pest controller to recognise that the kitchen cabinet was infested. In both the kitchens infested with tobacco





Piece of the infested decorative strip from the kitchen



On closer inspection of the cut-edge, you can see exit holes and a biscuit beetle (red arrow) in addition to the white "popcorn"

beetles and those infested with biscuit beetles, it was difficult to recognise them as such. The beetles seem to primarily infest the edges that are not veneered first. This usually only affects areas of the back wall and, in some cases, the edges of the decorative mouldings. Neither of these can be detected by a superficial inspection of the kitchen cabinet. Beetles also flew out of the holes where the shelf supports are normally inserted. The exit holes are difficult to see in these hidden areas of the kitchen. Frass (excreta) can also easily be misinterpreted as flour dust or crumbs in the kitchen. Only when the beetles gnaw their way out of areas of the kitchen where they can break through veneered surfaces can the exit holes be clearly identified.

So, it seems like we're dealing with a good idea or product development here, but unfortunately, it didn't take pest control into account. Since sustainability is becoming more and more important, we can expect to see building and insulation materials made from fast-growing plant-based raw materials in the coming years. Pest controllers should therefore be prepared to include furniture, building and insulation materials in their search for development substrates in the event of persistent infestations of storage pests in the coming years.



# Fendona 6SC Returns: The Comeback of a Trusted Insecticide

By Killgerm Communications



 [www.pestcontrolnews.com](http://www.pestcontrolnews.com)
 [@pestcontrolnews](https://twitter.com/pestcontrolnews)
 [facebook.com/pestcontrolnews](https://facebook.com/pestcontrolnews)

When a familiar name reappears on the pest control scene, it's bound to stir excitement – and Fendona's return has done just that. After several years off the UK market, BASF's much-loved residual insecticide is back, armed with a refined label and the same trusted performance that made it a staple for decades.

## A Familiar Face in Pest Control

In a recent episode of the Killgerm Podcast, host Michael Dunbar sat down with Laurence Barnard, Country Business Manager for BASF's Professional & Specialty Solutions in the UK and Ireland, to discuss why the industry has so warmly welcomed Fendona's comeback.

Laurence, a veteran of nearly twenty years in pest management – including roles at the BPCA, Killgerm, and now BASF – has seen the full spectrum of the industry: "I've done everything from fieldwork and technical support to marketing and product development," he shared. "So bringing Fendona back felt like restoring a piece of pest control history."

## The Road to Re-Registration

Fendona was withdrawn from the UK market in 2019 when its original registration was reviewed under the Biocidal Products Regulation (BPR). The label restrictions at the time, Laurence explained, made it impractical for general pest control use. "It came back as approved only for cockroaches in poultry houses – obviously, that wasn't viable," he said with a laugh.

Determined to restore the product's full potential, BASF resubmitted the data, targeting a broader and more relevant label for pest professionals. "In Europe, Fendona never left the spotlight. It's a huge product globally, so bringing it back here was a real priority," Laurence said.

## What's Changed – and What Hasn't

The new Fendona is chemically identical to the original formulation – its active ingredient remains alpha-cypermethrin (60 g/l), a highly refined synthetic pyrethroid known for both

knockdown and long-lasting residual effects. What has changed, however, is the label.

"The modern label is more specific," Laurence explained. "Gone are the days of simply listing 'flying and crawling insects.' BPR has made things more precise. But it still covers the vast majority of what pest controllers need day-to-day – ants, bedbugs, houseflies, and more."

One notable omission is fleas, once a major application area for Fendona. "We were disappointed not to get fleas back," Laurence admitted. "But flea work has declined over the last decade, so it's less of a blow to the market."

## Why Pest Controllers Loved It

So what makes Fendona so enduringly popular? "It's simple," said Laurence. "It works. It's a reliable, trusted insecticide with strong knockdown and excellent residual control on a wide variety of surfaces."

Many in the trade feel a sense of nostalgia for it. "For pest controllers who've been around a while, it's like welcoming back an old friend," he added. "It rarely failed anyone – that's why it stayed in everyone's toolbox for so long."

## The Science Behind the Spray

Fendona's strength lies not only in its active ingredient but also in its suspension concentrate (SC) formulation, which ensures the product remains effective on both porous and non-porous surfaces. This helps prevent absorption into materials like wood or plaster, allowing the insecticide to stay available for contact over time.

"On average, you'll get a knockdown within 30 minutes and a residual effect lasting up to six weeks," Laurence said. "It's a great middle ground – quick results but long-lasting control."

## Managing Resistance: A Call for Smarter Use

The conversation also turned to resistance management – a growing concern with pyrethroids. Laurence advised pest professionals to rotate insecticide groups, just as they would rotate rodenticides to break resistance. "Don't use the same active / group repeatedly. Mix your methods – integrate sprays with other tools like heat, steam, diatomaceous earth, or physical exclusion," he said.

Overuse and incorrect dosing, he warned, can accelerate resistance. "Labels exist for a reason. Stick to them. The key is being targeted and smart."

## Looking Ahead: What's Next from BASF

While Fendona's return is a big headline, it's far from BASF's last word. Laurence hinted at more innovation on the horizon: "This year was Fendona. Expect something new next year – actually, more than one thing," he teased. "We're working on exciting products, including one with a brand-new active ingredient that I think pest controllers will love."

With enthusiasm like that, it's clear that BASF's UK pest control portfolio is only getting stronger. As Laurence summed up:

"We're here to give pest professionals more tools, more choice, and more confidence in the products they use every day."



# Exhale:

## The Human in a Can Revolutionising Bed Bug Detection

[www.pestcontrolnews.com](http://www.pestcontrolnews.com)
[@pestcontrolnews](https://twitter.com/pestcontrolnews)
[facebook.com/pestcontrolnews](https://facebook.com/pestcontrolnews)

When brothers Christian and Nikolai Hagelein from Norway began exploring innovation in pest control, they weren't expecting to be compared to a "human in a can." But that's exactly what their new product, Exhale, has become known as – a cutting-edge tool designed to mimic human breath and lure bed bugs *Cimex lectularius* out of hiding.

The pair, co-founders of Skatek, joined Michael Dunbar on The Killgerm Podcast to discuss their journey, the science behind Exhale, and how it's reshaping bed bug management for professionals.

### From Family Roots to Innovation

For the Hagelein brothers, pest control is in their DNA. "We grew up with pest control in our home," says Christian. "Our dad worked in the industry for decades, so it felt natural for us to follow that path."

Nikolai, the original founder of Skatek, adds that the drive to innovate was there from the start. "We've always been entrepreneurs," he explains. "I actually began with insect powder as a protein source back in 2016 – but people weren't quite ready to eat insects."

A couple of years later, Norway faced a surge in long-tailed silverfish *Ctenolepisma longicaudatum*, and Nikolai discovered that these insects were cannibalistic. "That was my pivot into pest control – I developed a bait that worked brilliantly," he says. "From there, we started Skatek and began looking at other challenges – and bed bugs were the obvious next step."

### A Smarter Way to Lure Bed Bugs

Enter Exhale – a sleek, aerosol-based device that simulates human breathing to draw bed bugs from their harbourages. "Essentially, it's a professional tool to activate movement among bed bugs," Nikolai explains. "Technicians often use traps, both baited and unbaited, but without a host in the room, bed bugs simply stay put. That's where Exhale comes in."

Unlike older methods, such as using dry ice to produce CO<sub>2</sub>, Exhale offers a practical and consistent alternative. "Dry ice is costly, difficult to handle, and can't be stored for long," Christian notes. "Exhale removes all that hassle – it's safe, portable, and can be programmed to 'breathe' just like a human."

### How It Works: Mimicking a Host

So what makes Exhale so unique? "It's quite literally a human in a can," says Nikolai with a grin. "It releases a mixture of CO<sub>2</sub> and kairomones – the same compounds humans exhale. To bed bugs, it feels exactly like a living host is nearby."

The device dispenses its contents at set intervals, creating gentle waves





of gas that rise and fall like human breathing. "If you pump too much CO<sub>2</sub> into a room, bed bugs don't behave naturally," explains Christian. "They become inactive. Exhale mimics the subtle fluctuations that make them believe a real person is sleeping nearby."

Field trials have shown that Exhale is most effective during night hours – when bed bugs are naturally at their hungriest. "We see the most activity around midnight to 2 a.m.," says Christian. "That's when they expect their host to be asleep."

#### Practical Use and Performance

Each Exhale aerosol delivers about 90 bursts of its special formulation. Technicians can adjust the spray intervals – typically every 10 to 15 minutes – depending on the room size.

Christian advises: "In a small bedroom, you can use longer intervals. In larger areas, shorten them so there's enough CO<sub>2</sub> throughout the space." However, Exhale isn't a standalone fix. "It's not a miracle cure," he emphasises. "It's designed to complement other methods – insecticides, traps, and heat or steam treatments. The goal is to get the bed bugs moving so those other techniques can work better."

To measure its effectiveness, technicians should use sufficient traps in conjunction with Exhale. "If you only use a few traps, you might miss the activity entirely," says Christian. "We recommend plenty of monitoring points to really see what's happening."

#### Where It Works Best

Exhale is proving especially valuable in vacant apartments, hotels, and public housing – environments where human presence can't be relied on. "It's ideal for places where you can't ask someone to sleep in the room after treatment," Nikolai explains. "Hotels, in particular, need that flexibility."

Skatek's team collaborated with renowned entomologist Dr Richard

Naylor in the UK to refine placement strategies. "His research confirmed that positioning Exhale about a metre from the most affected area gives the best results," says Christian. "One unit covers a standard bedroom, but larger flats might need a second in the hallway or adjoining room."

#### Science in Action

To validate the technology, Skatek carried out extensive trials, including night-vision camera studies.

"We captured images every five seconds," Nikolai recalls. "When we compared control nights with nights using Exhale, the difference in activity was dramatic. You can literally see the bed bugs responding to the 'breathing' signal."

#### Accessible Guidance for Professionals

Skatek provides a detailed, evolving usage protocol, available through Killgerm in the UK or via skatek.no. "We even put a QR code on the aerosol," says Christian. "Scan it, and you'll get the latest setup instructions instantly."

#### A Step Forward for Bed Bug Management

**The brothers are clear about their mission:**

**Exhale isn't replacing technicians – it's empowering them.**

**"Our focus is to get the bed bugs moving," says Nikolai. "There's no easy cure for bed bugs, but if we can make detection and monitoring faster and more accurate, we're giving pest controllers a real advantage."**

**Michael Dunbar sums it up best in closing the podcast:**

**"It's a brilliant example of how technology and science can complement existing techniques – helping professionals stay one step ahead of one of the toughest pests we deal with."**

# MEDITERRANEAN FURNITURE BEETLE

*Oligomerus ptilinoides* | Family: Ptinidae

📍 [www.pestcontrolnews.com](http://www.pestcontrolnews.com)

📧 @pestcontrolnews

👍 [facebook.com/pestcontrolnews](https://facebook.com/pestcontrolnews)

They are easily confused with other woodboring insects, such as woodworm, because these insects are also xylophagous.

They preferentially inhabit coastline areas especially in Spain.

They can also be confused with biscuit beetles *Stegobium paniceum* (featured in this issue!).

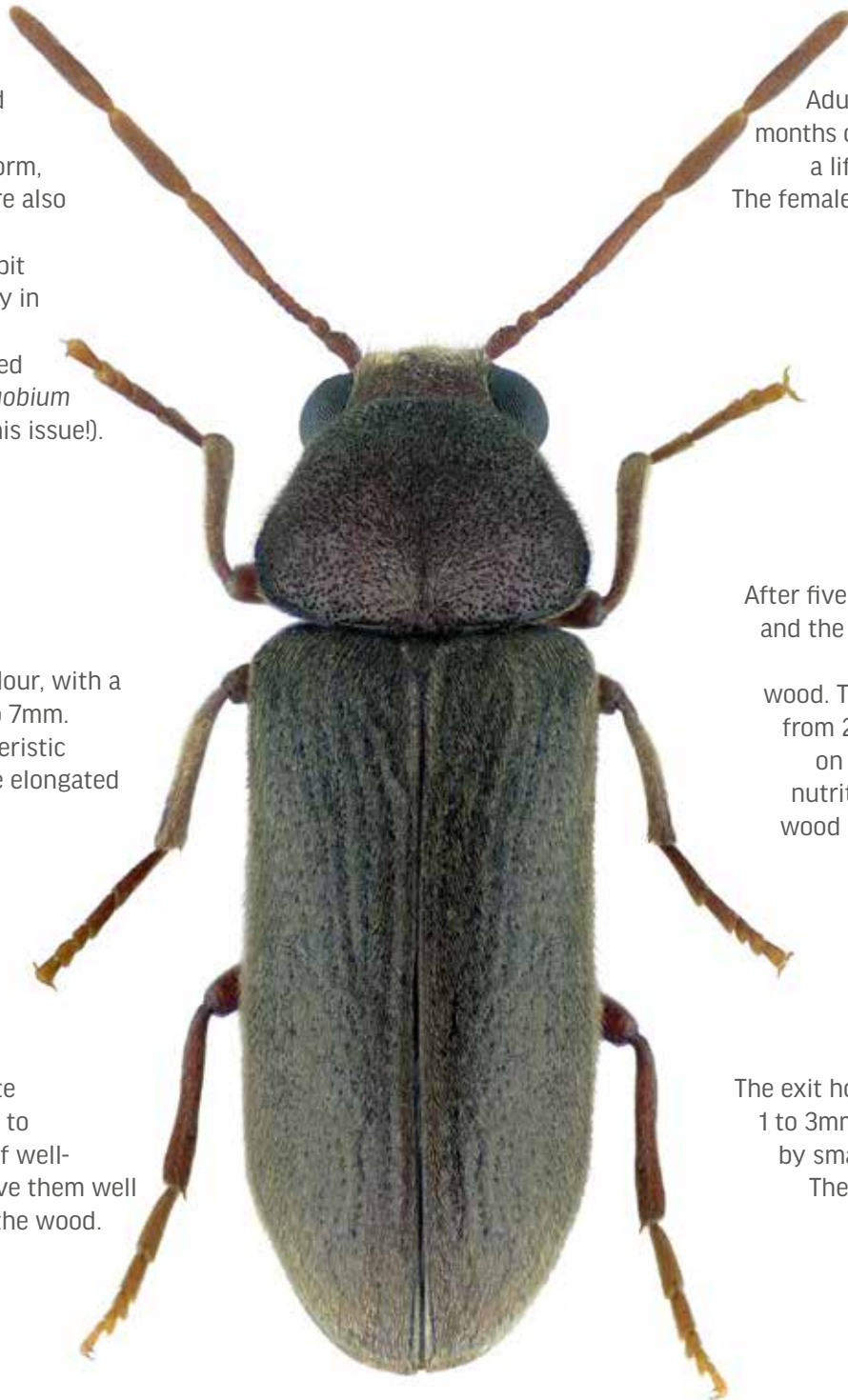
The adult is brown in colour, with a length ranging from 5 to 7mm. Adults feature a characteristic antennal club with three elongated segments.

The larva is creamy white with a size range from 5 to 7mm. They have a pair of well-developed jaws that serve them well for opening galleries in the wood.

Adults are seen during the months of May to July and have a lifespan of 3 to 4 weeks. The females, after copulation, lay their eggs on rough wood surfaces.

After five weeks, the eggs hatch and the first larvae appear and develop inside the wood. Their development lasts from 2 to 4 years, depending on the environmental and nutritional conditions of the wood on which they feed on.

The exit holes have a diameter of 1 to 3mm and are accompanied by small mounds of sawdust. They can cause damage to structures over time.





# Kit Maintenance on Ladders



➤ [www.pestcontrolnews.com](http://www.pestcontrolnews.com)    ✉ [@pestcontrolnews](https://twitter.com/pestcontrolnews)    👍 [facebook.com/pestcontrolnews](https://facebook.com/pestcontrolnews)

Training for the use of ladders is essential. Under The Work at Height Regulations 2005 (under the Health and Safety at Work Act 1974). Work at height equipment should be specifically designed for the task. Ladders are for short duration works or to access another area of work. They should not be used for long periods of time. If longer periods of work are required, another form of access or work platform should be used.

## Which ladders for what?

Step ladder: Basic tasks, everyday tasks, versatile equipment to reach or used to gain access to another area such as a loft space.

Step stool: Used occasionally to simply reach higher up – not enough height for access or usual work tasks.

Twin step ladder/A-frame ladders: Similar to the step ladder, with a varying design covering the same tasks.

Straight ladder/extension ladder: Useful for very high heights.

Extending to those very high places – the roof for example. Definitely not for long duration works. Ensure they are extended the correct way round, a support is needed (a wall, a tree). A second person is required for footing along with other restraints (foot plates, sway braces, eye-bolts, lashing etc. for safety), depending on the area of use. Arguably the riskiest ladder to use due to the additional height and possibility of falling off.

Platform ladder: Platform at the top, used for longer duration jobs due to the platform for standing.

## Ladder standards

All ladders should meet certain regulations and classifications. For example, EN 131 for Non-Professional and EN 131 Professional (this should be displayed on the ladder itself). EN standards ensure that the ladder meets baseline standards for safety, performance, load capacity, durability requirements, load capacity and stability. Again, all displayed on the ladder (usually on a metal plaque).

Ladder material is also important, ladders are usually metal, wood or fiberglass. Each has its own attributes.

## Pre-use checks:

The right ladder for the job (suitable and sufficient, sensible and practical):

- Risk assessment for the job in place
- Labels present and correct Scafftag (if used)
- Rungs – all present, none missing
- Feet – not damaged or worn, not cracked/split or damaged
- Stiles – not bent for damaged
- Nuts/bolts/springs – all sufficiently secure, present and correct and lubricated as necessary especially if present on a locking system
- Rails – not distorted or twisted
- Any platforms – not split or buckled, in good condition
- No sharp edges
- Free from any rust/corrosion
- Any other defective conditions

Footing checks: no wobble, securely fastened on a safe even surface, brace used as necessary. Ensure the 4 in 1 rule: for every 1 unit out, 4 units height. For example, if the ladder is reaching 4 meters out, it needs to be 1 meter from the wall at the base (maintaining a 75 degree angle).

**The pre-use check should be carried out by the person using the ladder and at the beginning of the working day or work task. Checks should be carried out if the ladder has been dropped or moved from different areas.**



# Health & Safety - Pathogens in pest management Part 2

➤ [www.pestcontrolnews.com](http://www.pestcontrolnews.com)

✉ [@pestcontrolnews](https://twitter.com/pestcontrolnews)

👍 [facebook.com/pestcontrolnews](https://facebook.com/pestcontrolnews)

A continued look into the pathogens carried by rodents in the real world, we know that rodents carry disease-causing pathogens. Proven during research and lab testing. Extending from PCN – 141 let's see what other pathogens are carried that can potentially impact public health even more so.

## Rat-bite fever (RBF)

Again, this is a rare bacterial disease in the UK typically caused by *Streptobacillus moniliformis* and *Spirillum minus* depending on the region where the bacteria were contracted. Direct contact with a rat, a bite or a scratch (but can also be spread via droppings, urine and saliva). Other rodents can also spread RBF.

## What can happen to you?

Symptoms include headache, rash, fever, often joint pain, muscle pain, lymph node swelling, and nausea/vomiting, with an onset of around 3 to 10 days following contact. Luckily, RBF can be treated with antibiotics. Blood and/or tissue samples are taken to confirm RBF in a potentially infected person, laboratory tests are then performed depending on the type. No vaccine is available, therefore swift treatment is recommended.

## What do we do to protect ourselves?

Pretty much the same as the other rodent-borne pathogens, PPE and good hygiene protocols.

## Lymphocytic choriomeningitis virus (LCMV, causing the disease Lymphocytic choriomeningitis in humans (LCM)).

LCMV can cause neurological symptoms, and flu-like symptoms, or can be asymptomatic. The worst-case scenario is if the initial flu-like phase is followed by meningitis or encephalitis which are much more serious. Potentially leading to spinal cord inflammation and paralysis, although this is very rare. Contracting LCMV is possible via infected fluids from the rodent vector, through broken skin, cuts, eyes, nose, or if bitten by a rodent or contact with fresh droppings. Nesting material urine or saliva can also be a source. LCMV is an RNA virus (ribonucleic acid) which unfortunately carries increased risk factors should an infection occur whilst pregnant. Risks include higher risk of miscarriage, birth defects and the possibility to pass to the developing foetus causing nerve damage, fluid on the brain and abnormal calcium deposits, also an increased mortality rate in newborns. The best prevention is again, good pest management and avoiding contact with wild house mice *Mus musculus* in particular. It is possible for other rodents to be vectors. They themselves are unaffected if they carry the virus.

## Is there a vaccine?

In short, no. And neither is there a cure. Treatment is symptomatic, often involving anti-inflammatories and corticosteroids to attempt to





decrease inflammation within the nerves, brain, and spinal cord. A virus to avoid! It is also thought that it is very under-reported. Cases have been found across Europe, the Americas, Australia and Japan.

#### What can we do to protect ourselves?

Firstly, avoid direct contact with wild mice *Mus musculus*, their droppings, nesting materials etc. Remember your PPE, especially gloves, and as always practice good hand hygiene. Ramp up the PPE if you are clearing droppings and don't forget that respirator.

#### Toxoplasmosis (*Toxoplasma* parasite, *Toxoplasma gondii*)

Unlike the other diseases covered, the infected individual can exhibit symptoms. The other viruses and bacteria use the rodent as a host only and don't usually affect the individual themselves, allowing them to shed the pathogen. Toxoplasmosis is different. Behaviour can be altered and consequentially the rodent is easier to catch, especially by an unwitting cat. The cat contact with the rodent starts the shedding pathway as the cat contracts the parasite then potentially uses a litter tray inside, thus bringing the parasite into possible human contact. It can also be contracted from undercooked meat.

#### What can happen to you?

All the usual symptoms apply when our immune response begins, high temperature, headache, aches, and pains, swollen glands, nausea. The more severe symptoms are confusion, affected vision, speech irregularities, and issues walking. Other problems can occur if contracted whilst pregnant, it can cause miscarriage or can pass to the developing foetus, causing serious complications – however, this is very rare. The parasite can be treated.

#### What can we do to protect ourselves?

It is worth remembering that it is only cat faeces, you cannot catch the parasite from cat contact such as having the cat in your house or stroking the cat – so there is no need to get rid of your pet cat! Again,

all the protocols mentioned all apply, wear gloves while emptying cat litter and good hand hygiene following. Avoid changing the cat litter tray whilst pregnant (this is standard advice from the NHS). If you do have to change and clean the litter tray, ensure you are fully protected with PPE.

#### Food poisoning bacteria

Key vectors for food poisoning bacteria include rodents (and insects to be covered in Part 3), basically anything that moves from unhygienic areas to clean areas and vice versa, spreading pathogens as they go. (Insect pests to be covered in Part 3, PCN issue 143). As a brief introduction, salmonella can survive in dry rodent droppings for well over 80 days, it is particularly hardy. Simply, clean those droppings and disinfect the area whilst wearing PPE! Not forgetting *E.coli*, particularly *Escherichia coli* 0157 shown to be carried by urban rats *Rattus norvegicus* and those rodents that are around agricultural areas.

#### Summary

It's undeniable that as front line pest management professionals, we are without a doubt at an increased risk of potential contact with pathogens associated with rodents and insects. The best advice is to follow protocols for disinfection, and cleaning and follow your risk assessment. You should conduct a COSHH assessment (Control Of Substances Hazardous to Health), pathogens constitute as substances hazardous to health. Use PPE correctly, and always follow good hygiene procedures. If you do feel unwell and have had recent contact with pests it is important to tell the medical professional all the details, this can be essential to performing the correct tests for a diagnosis and appropriate treatment.



# AF Trap Base:

## A Smarter, Safer Solution for Mouse Control

by Killgerm Communications



➔ [www.pestcontrolnews.com](http://www.pestcontrolnews.com)    ✕ [@pestcontrolnews](https://twitter.com/pestcontrolnews)    👍 [facebook.com/pestcontrolnews](https://facebook.com/pestcontrolnews)

With new legislation restricting the use of glue traps in England (due to licensing) and a ban in Wales, pest control professionals are facing one big question – what's the best alternative?

Killgerm's latest innovation, the AF Trap Base, provides the answer: a reliable, reusable, and license-free solution that delivers precision control in even the trickiest of environments.

### Adapting to Change

"Before licensing, pest controllers relied on glue traps to get them out of a tight spot," explains Michael Dunbar, Technical Manager at Killgerm. "They were essential tools in awkward locations – under kitchen kickboards, along warehouse walls, behind machinery, and around pallets. But now, with restrictions in place, the industry needs a smarter approach."

That's exactly what the AF Trap Base delivers: a flexible, professional-grade system that allows for precise placement and consistent results – without the compliance headaches.

### Precision Design Meets Practicality

At first glance, the AF Trap Base may look like a simple piece of kit, but it's been engineered with technicians in mind.

The base is designed to securely hold a snap-e mouse trap, featuring a built-in ramp that guides the mouse into the perfect striking position for a quick, humane result.

"It's all about creating the right angle of approach," says Dunbar. "The ramp ensures a clean strike every time."

The back clip locks the trap firmly in place, and the interlocking slots allow bases to be connected side-by-side or back-to-back, giving technicians the ability to form continuous lines or dual-sided setups depending on site conditions.

### Flexible for Any Environment

The modular design means the AF Trap Base can be configured to suit virtually any space – whether under shelving, against skirting boards, or in tight warehouse corners.

"It can be used as a simple blunder trap," Dunbar explains, "or paired with a suitable attractant for targeted control. The flexibility is what makes it so valuable – you can scale it up, move it around, and reuse it job after job."

And because it's fully mechanical, the system eliminates the need for additional licensing, saving both time and paperwork while meeting the new animal welfare standards for rodent control.

### A Modern Alternative to Glue Boards

For years, glue traps were the fallback solution in difficult situations. But with increased scrutiny over animal welfare, the shift towards humane, compliant methods was inevitable. The AF Trap Base bridges the gap between old and new – combining the convenience of glue board placement with the efficiency of a modern trap system.

"The feedback from technicians has been brilliant," says Dunbar. "They like that it's quick to place, easy to clean, and adaptable to multiple job types. It gives them control and consistency, without compromise."

### Simple, Scalable, and Sustainable

Beyond its technical advantages, the AF Trap Base offers a clear operational benefit: cost-efficiency. The reusable design not only reduces waste but also simplifies inventory management.

"It's a practical, cost-effective alternative that every technician can integrate into their existing toolkit," Dunbar concludes. "We've designed it for real-world use – for the people who are out there every day solving pest problems."

### Find Out More

The AF Trap Base is available now through Killgerm.

For further details, demonstrations, or to speak to your local ASM, visit [www.killgerm.com](http://www.killgerm.com).

# New Products

➔ [www.pestcontrolnews.com](http://www.pestcontrolnews.com)    ✕ @pestcontrolnews    👍 [facebook.com/pestcontrolnews](https://facebook.com/pestcontrolnews)

## Vazor® Parasitic Wasps

Tackle moth infestations effectively with this professional biological solution that targets every stage of the moth lifecycle. The Vazor Parasitic Wasp CL combines pheromone-based monitoring with a biological treatment using *Trichogramma evanescens*, a UK-native parasitic wasp that safely interrupts the breeding cycle. Ideal for domestic, commercial, and heritage environments, this pesticide-free system delivers powerful results without chemicals or odours.

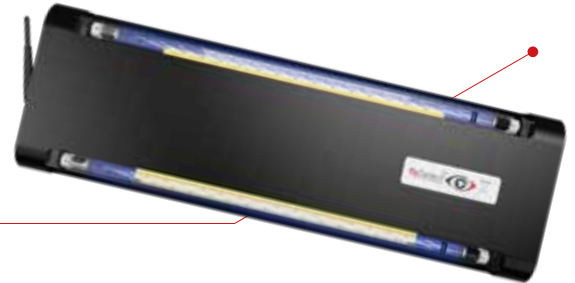
Visit [www.killgerm.com](http://www.killgerm.com)



## flyDetect® X

The improved flyDetect X is built for 24/7 remote fly monitoring, allowing visual access to images of the trap's sticky board on demand. With customisable alerts and multi-site visibility, whilst consuming less than half the power of the fluorescent model. **Now with no subscription fees.**

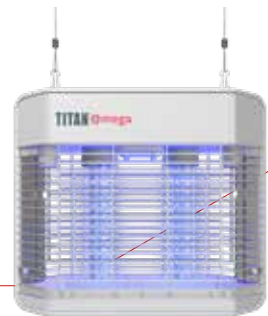
Visit [www.killgerm.com](http://www.killgerm.com)



## Titan® Omega

The Titan® Omega uses 120 UV LED light emitters to efficiently attract flying insects and eradicate them using a high voltage killing grid. Requires limited maintenance and consuming only 26W of electricity, it saves the end-user hundreds of pounds in electricity over the years compared with an equivalent model fitted with fluorescent tubes.

Visit [www.killgerm.com](http://www.killgerm.com)



## Sunburst® LED

Sunburst LED is a fly trap that combines elegance with effectiveness, providing discreet insect control for restaurants, hotels, cafés, and retail spaces. Designed to complement modern interiors, it conceals glue boards and captured insects while using advanced UVA LED technology for silent, energy-efficient performance and long-lasting fly attraction.

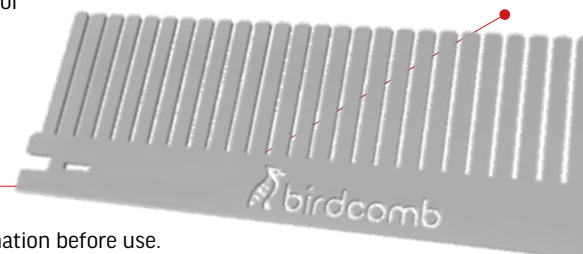
Visit [www.killgerm.com](http://www.killgerm.com)



## Birdcomb

Birdcomb is a galvanised steel eaves-comb filler designed to permanently block pest entry at rooflines. With chew-proof metal teeth, it excludes birds, rodents and larger insects while preserving ventilation. Built for durability—lasting up to 75 years—it replaces inferior plastic alternatives for long-term roof protection.

Visit [www.killgerm.com](http://www.killgerm.com)



Use biocides safely. Always read the label and product information before use.



# Building the Future Pest Control Workforce –

## How the NPTA Is Helping Members Attract New Talent

➔ [www.pestcontrolnews.com](http://www.pestcontrolnews.com)    ✉ [@pestcontrolnews](https://twitter.com/pestcontrolnews)    👍 [facebook.com/pestcontrolnews](https://facebook.com/pestcontrolnews)

The pest control industry is entering a crucial period. With an ageing workforce, rapid technological change, and an ever-growing need for skilled professionals, attracting new people into the sector has never been more important. At the National Pest Technicians Association (NPTA), we are committed to helping our members meet that challenge head-on.

Over the past year, we have launched several major initiatives designed to support recruitment, widen access, and showcase pest control as a modern, rewarding and vital profession. Together, these initiatives form a long-term strategy to ensure our sector continues to grow, innovate and protect public health across the UK.

### The Careers Hub – In Partnership With RSPH

One of the most exciting developments is the launch of our Careers Hub, developed in partnership with the Royal Society for Public Health (RSPH). In recognition of the strong links between pest control and public health, this partnership provides a national platform for anyone interested in exploring a career in pest control. It brings together:

- Clear pathways into the industry
- Real-world insights from working technicians and business owners
- Information for schools, parents and careers advisers
- Support for people looking to retrain or progress
- Opportunities for employers to reach new audiences

The Careers Hub also highlights the important public health role our industry plays, something rarely recognised outside the sector. By introducing the industry earlier and more clearly to those considering their future, we have increased sector visibility and improved the perception of pest control as a skilled, professional career.

### 5<25 Professional Futures – Backing the Industry's Young Talent

As part of our commitment to futureproofing the sector, the NPTA is also launching the 5<25 Professional Futures programme.

This initiative provides fully funded RSPH Level 2 training for young people under 25 employed by NPTA members. Each participant receives:

- Fully funded RSPH Level 2 Award in Pest Management
- Mentoring and industry support
- Access to NPTA expert teams
- A structured start to a long-term career in pest control

The aim is simple: give young professionals the strongest possible foundation and help NPTA members bring fresh talent into their businesses without the financial barrier of training costs.

By supporting early career development, we strengthen planning and ensure the industry continues to attract bright, motivated individuals.

### Supporting Members to Recruit from the Armed Forces

Another key route into the industry is through the Career Transition Partnership (CTP). The NPTA has created a dedicated support package for members who are ex-service personnel, offering:

- Funding support towards the cost of RSPH Level 2 training
- Free advertising on the NPTA Careers Hub
- Resources to help employers engage with the Armed Forces community

Service leavers bring exceptional discipline, resilience and problem-solving skills, all of which transfer directly into pest control. Our Armed Forces initiative ensures members can connect with this highly capable talent pool and receive structured support throughout the process.

### Why This Matters

Together, the Careers Hub, 5<25 Professional Futures and Armed Forces recruitment support represent the most comprehensive talent attraction strategy our industry has seen in the UK pest control sector.

### For our members, this means:

- Access to new, motivated candidates
- Reduced costs and risk of recruitment
- National visibility through recognised partner channels
- Stronger pipelines for future workforce growth

But more importantly, this work lays the foundation for an industry that continues to protect public health for decades to come.

The NPTA will keep building this future by raising standards, supporting members at every level, and championing the people who make our profession what it is.

# BPCA to Launch Pest Careers Hub: Your Help Needed



➤ [www.pestcontrolnews.com](http://www.pestcontrolnews.com)    ✉ [@pestcontrolnews](mailto:@pestcontrolnews)    👍 [facebook.com/pestcontrolnews](https://facebook.com/pestcontrolnews)

BPCA is preparing to launch a brand-new online hub to showcase careers in pest management – and pest professionals are being asked to get involved.

Launching this month, [pestcareers.org.uk](http://pestcareers.org.uk) is a BPCA project developed by the Equality, Diversity and Inclusion (EDI) Committee, which is made up of volunteer pest managers. The website aims to inspire more people from a wide range of backgrounds to consider pest management as a career.

## Facing recruitment challenges head-on

The pest management sector plays a crucial role in protecting public health, safeguarding the food chain, and ensuring the safety of our homes and workplaces. However, the industry faces a recruitment challenge. With an ageing workforce and a growing demand for professional services, we urgently need fresh talent to step in.

## The new hub aims to:

- Break down outdated perceptions of pest control
- Ensure career advisors recognise pest management as a valid and rewarding trade

- Encourage underrepresented communities to consider roles in the industry
- Provide honest, practical guidance for those interested in starting a career.

From recent graduates to ex-forces personnel and individuals retraining from hospitality or healthcare, pest management has a place for everyone.

## Powered by industry professionals

The site brings together stories, advice and resources straight from the industry. Real pest professionals explain how they found their way into the sector, what the work involves and why it matters.

## Visitors will find:

Industry stories  
First-hand accounts from technicians, consultants and business owners across the UK.

## Starting out

Clear guidance on training, finding work and setting up in business.

## How you can help

We're calling on passionate pest professionals to support the project by:

- Sharing resources that could be featured on the hub
- Telling your story so it can be turned into an inspirational blog
- Uploading your latest vacancies to the BPCA jobs board so candidates can connect directly with employers.

Lend us your support by contacting [hello@bpca.org.uk](mailto:hello@bpca.org.uk)

## A career that makes a difference

BPCA Chief Exec, Rosina Robson, said: "Pest professionals stop the spread of disease, protect property and play a vital role when new threats emerge. "For those who enjoy solving problems, want variety in their day and like helping people, pest management is a career worth exploring. "BPCA is proud to champion the next generation of pest professionals, and [pestcareers.org.uk](http://pestcareers.org.uk) will be the first step in helping more people discover the opportunities this industry has to offer."



# BASIS 25 PROMPT

2025 marked 25 years since the launch of the BASIS PROMPT Pest Controllers Register, a quarter-century of championing professionalism, continuous development, and excellence in the UK pest management sector.

Established in 2000 as an independent body, the Register was created to encourage technicians and managers alike to take part in regular training and education, ensuring the industry continues to grow in knowledge, skill, and integrity.



For a quarter-century, the Basis PROMPT scheme has been a cornerstone of professional growth in the UK pest control industry.

Basis is the truly independent CPD organisation and it's testament to the dedication of countless individuals and organisations who recognised the vital importance of lifelong learning. Here's to 25 years of elevating standards, fostering expertise, and empowering professionals to continuously learn, adapt and excel in an ever-evolving landscape.

Paul Blackhurst  
BASIS PROMPT Chairman



Through Continuing Professional Development (CPD), registered technicians stay up to date with evolving legislation, emerging products, and best practices, equipping them to protect public health, food safety, and the environment with confidence and care.



Celebrating 25 years of the BASIS PROMPT register is a proud milestone.

PROMPT has played a vital role in raising and maintaining standards across pest management through verified training and CPD. As the sector faces new challenges, including upcoming CRRU UK requirements, we're evolving to meet them, developing tools like our new app and expanding flexible learning through BASIS Classroom. PROMPT remains a trusted mark of professionalism, and we're committed to supporting the industry for the next 25 years and beyond.

Corrina Urquhart  
Chief Executive Officer - BASIS



## Why PROMPT Matters

Being PROMPT registered means more than holding a certificate. It means:

- You've undergone recognised training
- You maintain current knowledge through CPD
- You uphold ethical, responsible, and stewardship standards.

This commitment ensures that local authorities, businesses, and the general public can trust BASIS PROMPT registered technicians to deliver safe, compliant, and effective pest control services.



25 years is an impressive milestone for BASIS PROMPT. I've been a member of the CPD points scheme for over 15 years.

It's a symbol of my ongoing professional commitment to the highest standards of pest management possible. Being registered and maintaining my points shows that I'm up to date, knowledgeable, and also helps to build competency, which can be a challenge in a service industry. It's great to see BASIS PROMPT progress over the years, adding educational content with BASIS Classroom and point tracking improvements. I'm looking forward to seeing the next stage developments with ease of use and multiplatform streamlining.

Avril Turner  
Technical Manager (Kilgerm)



## An Industry-Wide Standard

BASIS PROMPT has earned recognition and support from many key industry bodies from the onset, including:

- The Chartered Institute of Environmental Health (CIEH)
- The National Pest Technicians Association (NPTA)

# Celebrating 25 Years of Raising the Standard in Pest Control

🔗 [www.pestcontrolnews.com](http://www.pestcontrolnews.com)    📧 @pestcontrolnews    👍 facebook.com/pestcontrolnews

- The Royal Environmental Health Institute of Scotland (REHIS)
- The Royal Society for Public Health (RSPH)
- The British Pest Control Association (BPCA)
- The Sector Skills Council



I have proudly served on the board of BASIS PROMPT for over 25 years, representing small to medium-sized enterprises. Many of my clients, who are regularly audited by organisations such as M&S, Red Tractor, and others, regard our continued membership with BASIS PROMPT as equally important as being affiliated with the British Pest Control Association (BPCA), the National Pest Technicians Association (NPTA), or holding a SAFE contractor certification.

In an industry undergoing constant change, the most effective way to stay ahead is through a commitment to continuing professional development. BASIS PROMPT plays a vital role in supporting that goal.

Iain Urquhart



## A Platform for the Future

We are looking firmly to the future, Autumn 2026 will see another major step forward with the phased launch of a new BASIS App and an updated members' area on the website.

Developed to make CPD management simpler than ever, the app will provide quick access to personal records, QR code scanning at events for instant updates, and an easier way to keep membership details accurate. For CPD organisers, the new system will streamline administration and ensure attendance is recorded more efficiently.

These innovations form part of a wider digital transformation programme, which also includes essential data migration and a redesigned online portal. Successfully tested this summer at one of the shows BASIS attends, it was

greeted with enthusiasm, the app represents a modern, reliable, and member-friendly service - strengthening PROMPT's role as the trusted partner for professional development for the next 25 years and beyond.

## Looking Ahead: The Next 25 Years

As we mark this milestone, we look to the future with the same focus on quality and professionalism that brought us here.

Whether you're a long-time member or new to the industry, now is the perfect time to align yourself with a register that values integrity, competence, and continuous improvement.



BASIS PROMPT has been a key component in driving the professionalisation and evolution of our industry.

By championing continuous development and providing a platform for pest control professionals to demonstrate their commitment to learning, the scheme recognises those who invest in their skills, as such it has helped raise standards in the pest industry.

Congratulations on 25 years and here's to the continued journey of raising the bar for our profession.

Kevin Lawrenson  
Chief Executive Officer - NPTA



## Join the Register

Are you committed to professionalism, compliance, and lifelong learning? Celebrate 25 years of BASIS PROMPT by becoming part of a nationally recognised community of trusted pest management professionals.

Apply today and take the next step in your professional journey.

To register, fill out the form and send it to: [prompt@basis-reg.co.uk](mailto:prompt@basis-reg.co.uk)



# Employment Rights and the upcoming changes

in accordance with the proposed Employment Rights Bill



0113 245 0845   [giles.ward@milnerslaw.com](mailto:giles.ward@milnerslaw.com)   [uk.linkedin.com/pub/giles-ward/31/187/6b3](https://uk.linkedin.com/pub/giles-ward/31/187/6b3)   @MilnersGiles

Every employer has to keep in the forefront of their mind their employees' rights when making decisions in relation to their business. These rights are about to change with the upcoming Employment Rights Bill which is likely to receive Royal Assent following its final reading in the House of Lords on the 28 October 2025 and become part of legislation later this year or early 2026. Employers should look forward with this Bill looming and ensure they are ready for its implementation into the law and further that they are compliant and aware of all aspects of it. This article will set out the main areas in which this Bill is proposing change and deep dive into one of the categories. If you wish to read all changes being implemented by this Bill, please see the factsheet on the Governments website ([Gov.uk](https://www.gov.uk)).

The Employment Rights Bill seeks to focus on reforming a range of different topics which have been categorised under the following aims. The Bill will seek to:

- address one-sided flexibility, ensuring that jobs provide a baseline of security for workers;
- ensure workers get fair pay for a fair day's work;
- support family friendly rights by improving flexibility and security;
- prioritise fairness, equality, and wellbeing of workers;
- modernise trade union legislation by giving trade unions greater freedom; and
- improve upon the enforcement of employment rights.

To go through each of these aims separately would produce an overwhelming amount of information, so for the purposes of this article we will only look at the first aim in depth. Namely the first aim of the Bill seeking to address one-sided flexibility to ensure that jobs provide a baseline of security for workers. The Bill has sought to meet this aim through a number of changes, the first of which is that it seeks to end exploitative zero-hour contracts by introducing rights to guaranteed hours, reasonable notice of shifts and payments for short-notice cancellation of

shifts for agency workers. Secondly the Bill seeks to end "fire and rehire" and "fire and replace" practices by considering dismissals for failing to agree to a change in contract as automatically unfair, except where businesses have no alternative. Thirdly the Bill is looking to remove the 2-year qualifying period for the right to claim unfair dismissal, this right is becoming a day 1 right enabling claims to be brought by all employees no matter their years of service. This point is however caveated by the fact that employers will now be able to establish if an employee is a good fit and proper for the job by establishing a new statutory probation period. Penultimately the Bill is also strengthening the collective redundancy rights which apply when the employer either proposes 20+ redundancies at one establishment or the employer proposes an amount of redundancies which meets a new threshold to be established in secondary legislation. Finally, the Bill will also be closing the maritime redundancy notification loophole to ensure that all operators providing regular services to British ports cannot avoid the collection redundancy notification requirement.

As can be seen from the above, largescale changes in how employers manage their businesses are imminent with the soon to be implemented rules from the upcoming Employer Rights Bill. Should you or your organisation need any assistance in navigating these new employment rights or have any further issues in regard to employment law or indeed any legal issue, please feel free to contact me in confidence on mobile 07789 401 411 or via email [giles.ward@milnerslaw.com](mailto:giles.ward@milnerslaw.com).

# 2026 Training Dates

Your guide to pest control training events near you

Killgerm Training run courses nationwide offering different types of courses for different levels of experience and knowledge.

Details of all course dates and locations are available online at: [www.killgermtraining.com](http://www.killgermtraining.com)

There is also a full list in the Killgerm catalogue

For further information or to book your place on a course call: 01924 268445 or email [training@killgerm.com](mailto:training@killgerm.com)

Date	Venue	Cost plus VAT
<b>BASIC PRINCIPLES OF PEST CONTROL</b>		
<b>Open Awards Level 2 Award in the Principles of Rodent Control</b>		
10th Feb 2026	Ossett	£190 Inc lunch
14th April 2026	Ossett	£190 Inc lunch
<b>Killgerm Principles of Insect Control</b>		
11th & 12th Feb 2026	Ossett	£215 Inc lunch
15th & 16th April 2026	Ossett	£215 Inc lunch
<b>SPECIALIST COURSES</b>		
<b>Safe use of Air Weapons for Bird Control</b>		
28th April 2026	Doncaster	£245 Inc lunch
11th May 2026	Holmes Chapel	£245 Inc lunch
<b>Advanced Safe use of Air Weapons</b>		
12th May 2026	Holmes Chapel	£260 Inc lunch
<b>Bird Control</b>		
13th & 14th April 2026	Holmes Chapel	£340 Inc lunch
<b>Bird Free</b>		
7th May 2026	Ossett	FOC
<b>Bird Guano</b>		
19th Feb 2026	Ossett	£190 Inc lunch
<b>Drainage Investigations &amp; Rat Control</b>		
5th March 2026	Ossett	£245 Inc lunch
<b>PRACTICAL COURSES</b>		
<b>Trapping Techniques</b>		
30th April 2026	York	£190 Inc lunch
<b>Level 2 Award in the Safe Use of Pesticides (PA1 &amp; PA6)</b>		
25th, 26th & 27th Feb 2026	Ossett	£605 Inc lunch
<b>INSECT WORKSHOPS</b>		
<b>Insect Workshop 2 - Ants, Bees &amp; Wasps</b>		
10th March 2026	Ossett	£190 Inc lunch
<b>Insect Workshop 1 - Bedbugs &amp; Fleas</b>		
11th March 2026	Ossett	£190 Inc lunch

<b>ROYAL SOCIETY FOR PUBLIC HEALTH LEVEL 3 AWARD IN PEST MANAGEMENT</b> FEE - £880 + VAT per person (includes Killgerm manual, RSPH Exam, lunch refreshments)		
<b>Venue: Ossett</b>		
Training and Information day	30th June 2026	
Core Unit Examination	28th July 2026	

Date	Venue	Cost plus VAT
<b>SURREY</b>		
<b>BASIC PRINCIPLES OF PEST CONTROL</b>		
<b>Open Awards Level 2 Award in the Principles of Rodent Control</b>		
10th March 2026	Lingfield	£190 Inc lunch
<b>Killgerm Principles of Insect Control</b>		
11th & 12th March 2026	Lingfield	£215 Inc lunch
<b>EAST ANGLIA</b>		
<b>BASIC PRINCIPLES OF PEST CONTROL</b>		
<b>Open Awards Level 2 Award in the Principles of Rodent Control</b>		
5th May 2026	Norwich	£190 Inc lunch
<b>Killgerm Principles of Insect Control</b>		
6th & 7th May 2026	Norwich	£215 Inc lunch

Date	Venue	Cost plus VAT
<b>BERKSHIRE</b>		
<b>BASIC PRINCIPLES OF PEST CONTROL</b>		
<b>Open Awards Level 2 Award in the Principles of Rodent Control</b>		
12th May 2026	Newbury	£190 Inc lunch
<b>Killgerm Principles of Insect Control</b>		
13th and 14th May 2026	Newbury	£215 Inc lunch
<b>INSECT WORKSHOPS</b>		
<b>Insect Workshop 1 - Bedbugs &amp; Fleas</b>		
29th April 2026	Newbury	£190 Inc lunch
<b>Insect Workshop 2 - Ants, Bees &amp; Wasps</b>		
28th April 2026	Newbury	£190 Inc lunch

Date	Venue	Cost plus VAT
<b>MIDLANDS</b>		
<b>BASIC PRINCIPLES OF PEST CONTROL</b>		
<b>Open Awards Level 2 Award in the Principles of Rodent Control</b>		
24th March 2026	Burton on Trent	£190 Inc lunch
<b>Killgerm Principles of Insect Control</b>		
25th and 26th March 2026	Burton on Trent	£215 Inc lunch

<b>SPECIALIST COURSES</b>		
<b>Drainage Investigations &amp; Rat Control</b>		
12th Feb 2026	Burton on Trent	£245 Inc lunch

<b>INSECT WORKSHOPS</b>		
<b>Insect Workshop 2 - Ants, Bees &amp; Wasps</b>		
20th May 2026	Burton on Trent	£190 Inc lunch

Date	Venue	Cost plus VAT
<b>BRISTOL</b>		
<b>BASIC PRINCIPLES OF PEST CONTROL</b>		
<b>Open Awards Level 2 Award in the Principles of Rodent Control</b>		
21st April 2026	Bristol	£190 Inc lunch
<b>Killgerm Principles of Insect Control</b>		
22nd & 23rd April 2026	Bristol	£215 Inc lunch

<b>Drainage Investigations &amp; Rat Control</b>		
19th March 2026	Bristol	£245 Inc lunch
<b>INSECT WORKSHOPS</b>		
<b>Insect Workshop 2 - Ants, Bees &amp; Wasps</b>		
28th May 2026	Bristol	£190 Inc lunch

<b>ROYAL SOCIETY FOR PUBLIC HEALTH LEVEL 2 AWARD IN PEST MANAGEMENT</b> FEE - £980 + VAT per person (includes Killgerm manual, RSPH Exam, lunch & refreshments)		
<b>Venue: Newbury</b>		
Unit 3	Monday 16th & Tuesday 17th February 2026	
Unit 1	Monday 23rd & Tuesday 24th February 2026	
Unit 2	Monday 2nd & Tuesday 3rd March 2026	
Examination	Wednesday 4th March 2026	

<b>ROYAL SOCIETY FOR PUBLIC HEALTH LEVEL 3 AWARD IN PEST MANAGEMENT</b> FEE - £880 + VAT per person (includes Killgerm manual, RSPH Exam, lunch & refreshments)		
<b>Venue: Newbury</b>		
Training and Information day	16th April 2026	
Core Unit examination	30th April 2026	

Date	Venue	Cost plus VAT
<b>SCOTLAND</b>		
<b>BASIC PRINCIPLES OF PEST CONTROL</b>		
<b>Open Awards Level 2 Award in the Principles of Rodent Control</b>		
19th May 2026	Livingston	£190 Inc lunch
<b>Killgerm Principles of Insect Control</b>		
20th and 21st May 2026	Livingston	£215 Inc lunch
<b>INSECT WORKSHOPS</b>		
<b>Insect Workshop 2 - Ants, Bees &amp; Wasps</b>		
9th April 2026	Livingston	£190 Inc lunch
<b>ROYAL SOCIETY FOR PUBLIC HEALTH LEVEL 2 AWARD IN PEST MANAGEMENT</b> FEE - £980 + VAT per person (includes Killgerm manual, RSPH Exam, lunch & refreshments)		
<b>Venue: Scotland Livingston</b>		
Unit 3	Tuesday 8th & Wednesday 9th September 2026	
Unit 1	Tuesday 15th & Wednesday 16th September 2026	
Unit 2	Tuesday 22nd & Wednesday 23rd September 2026	
Examination	Thurs 24th September 2026	



## A COCKTAIL OF DISCOVERIES

Welcome to a brand-new event from Killgerm!

**21st April 2026**

Drayton Manor Hotel



**Breakfast Meetings**

**Rise & Shine**

Start your day the Killgerm® way

**NEW DATES FOR 2026**

<b>NORTHERN</b> 12th February - Durham 18th February - Cheshire 25th February - Hull 6th May - Penrith 2nd December - Doncaster	<b>SOUTHERN</b> 15th April - Haydock 30th September - Exeter
<b>MIDLANDS</b> 16th April - Derby 25th March - Birmingham 14th May - Bury St Edmunds 2nd December - Northampton	<b>SCOTLAND</b> 11th March - Glasgow 7th October - West Lothian
<b>WALES</b> 1st October - Cardiff	

Book online at [www.killgerm.com](http://www.killgerm.com) or call 01924 268516



Details of all courses are available online  
[www.killgermtraining.com](http://www.killgermtraining.com)





**Killgerm®**

You know when  
you're in safe hands!

[www.killgerm.com](http://www.killgerm.com)

# Two Apps | ONE TOTAL PEST CONTROL SOLUTION

**Get your  
APP only  
Monthly  
offers!**

Download our apps  
today and receive  
exclusive app only offers  
throughout the year!

Android and IOS compatible, on all mobile  
and tablet devices. Problem scanning the  
QR codes? Please visit: [killgerm.com/apps](http://killgerm.com/apps)



Download on the  
App Store



GET IT ON  
Google Play



Immediate notifications  
of industry updates



Easy downloads for sharing  
including MSDS and labels



Information  
at your fingertips!



Exclusive  
app-only offers!



## Order directly from our ordering app

Android and IOS compatible, on all mobile  
and tablet devices. Problem scanning the QR  
codes? Please visit: [killgerm.com/apps](http://killgerm.com/apps)

Now you can order our great products  
and get all the latest, trusted pest control  
info, wherever you're connected.



**With the Killgerm® Ordering & Support Apps  
we're always by your side**

